

DUST & BLOOD

TWO SCENARIOS OF GASLIGHT LONDON

KEEPER MAP PACK

Dust & Blood © 2025 Chaosium Inc. All rights reserved.

Cthulhu By Gaslight © 1986, 1988, 2012, and 2025 Chaosium Inc. All rights reserved.

Call of Cthulhu (7th Edition) © 1981–2025 Chaosium Inc. Pulp Cthulhu © 2016–2025 Chaosium Inc. All rights reserved.

Call of Cthulhu, Chaosium Inc., and the Chaosium dragon are registered trademarks of Chaosium Inc.

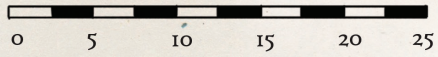
This material is protected under the copyright laws of the United States of America. Reproduction of this work by any means without written permission of Chaosium Inc., except for the use of short excerpts for the purpose of reviews and the copying of character sheets and handouts for in-game use, is expressly prohibited.

Chaosium Inc.
3450 Wooddale Court
Ann Arbor, MI 48104



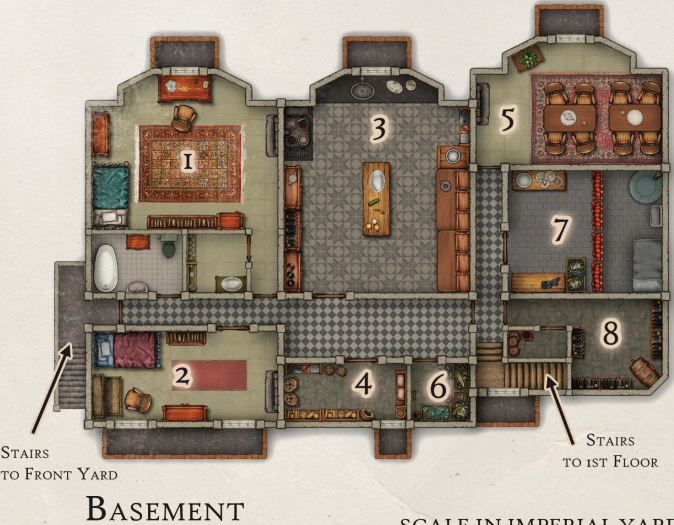
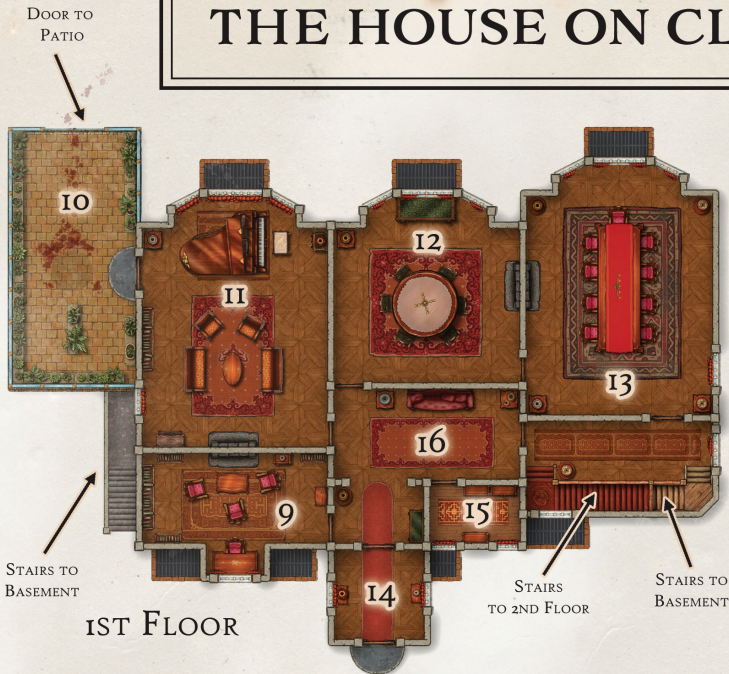
DUST YARD

SCALE IN IMPERIAL YARDS

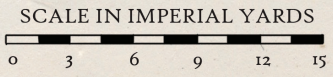


- | | | | | | |
|----|-------------------------|----|--------------------------|----|---------------------------------|
| 1 | Yard Gate | 7 | Breeze Pile | 14 | Bone Cauldron |
| 2 | Office & Counting House | 8 | Rag Shed | 15 | Bone Crusher & Crockery Stamper |
| 3 | Tot-shop & Sorting Shed | 9 | Cart Shed | 16 | Aggregate Pile |
| 3a | Dry Storage | 10 | Wheelwright / Carpenter | 17 | Manure Heaps |
| 4 | Laystalls | 11 | Stables | 18 | Canal Wharf |
| 5 | Sifters' Room | 12 | Destructor | | |
| 6 | Sifted Dust Pile | 13 | Destructor Hamp & Hopper | | |

THE HOUSE ON CLAYLE AVENUE



- Explanation*
- 1 Butler's Room
 - 2 Cook's Room
 - 3 Kitchen
 - 4 Larder
 - 5 Servants' Hall
 - 6 Dust-hole
 - 7 Scullery
 - 8 Wine Cellar
 - 9 Study
 - 10 Conservatory
 - 11 Drawing Room
 - 12 Breakfast Room
 - 13 Dining Room
 - 14 Entrance Hall
 - 15 Cloak Room
 - 16 Reception Hall
 - 17 Linen Cupboard
 - 18 Dressing Room
 - 19 Master Bedroom
 - 20 Guest Bedroom
 - 21 Master Bathroom
 - 22 Private Study
 - 23 Library
 - 24 Valet's Bedroom
 - 25 Housekeeper's Bedroom
 - 26 Guest's Valet Bedroom
 - 27 Lumber Room
 - 28 Box Room
 - 29 Servants' Bathroom



WHITECHAPEL

Map of Whitechapel area in the East End of London.



Explanation

- 1 Upper East Smithfield - Murder 1
- 2 Exmouth Street - Murder 2
- 3 Whitechapel Station - Murder 3
- 4 Blind Horse Pub, Denmark St - Murder 4
- 5 Sidney St - Murder 5
- 6 Brushfield St - Murder 6
- 7 Great Assembly Hall, Whitechapel Rd - Inquest 1
- 8 Commercial Street Music Hall - Inquest 2
- 9 School on Hanbury St - Inquests 3 & 4
- 10 St Mary Matfelon - Inquest 5
- 11 Police Station, Leman St, Aldgate
- 12 F. Francis, Haberdashers, Old Castle St
- 13 Thrawl St

SCALE IN IMPERIAL YARDS



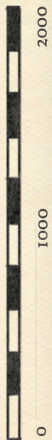
MALBRAY ASYLUM LOCATION

Map of Hackney Marsh and Victoria Park area.

— Explanation —

- 1 Malbray Asylum
- 2 Victoria Park Station
- 3 Victoria Park

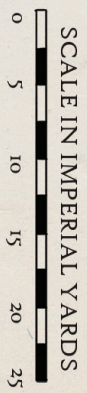
SCALE IN IMPERIAL YARDS



MALBRAY ASYLUM GROUNDS



- Explanation —
- 1 Main House
 - 2 Woodshed
 - 3 Stable & Carriage House
 - 4 Well
 - 5 Gate
 - 6 Road
 - 7 Stream



PLAN OF MALBRAY ASYLUM

STAIRS TO
KITCHEN



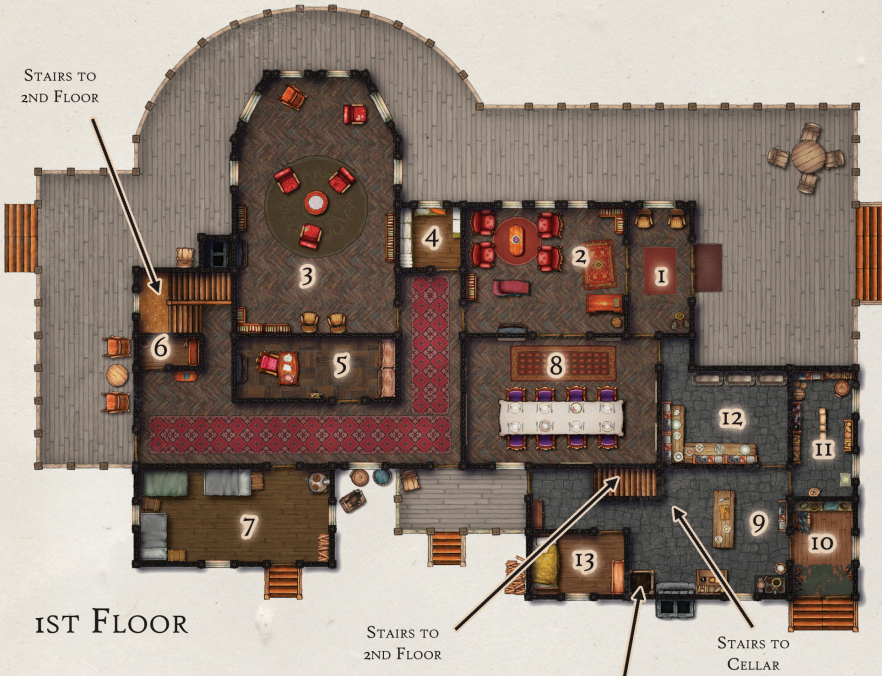
CELLAR



ATTIC

STAIRS TO
THE LABORATORY

STAIRS TO
2ND FLOOR



1ST FLOOR

STAIRS TO
2ND FLOOR

DUMBWAITER

STAIRS TO
CELLAR

— Explanation —

- 1 Entrance Hall
- 2 Receiving Room
- 3 Living Area
- 4 Linen Closet
- 5 Office & Records Room
- 6 Closet
- 7 Orderlies' Room
- 8 Dining Room
- 9 Kitchen
- 10 Porch
- 11 Larder
- 12 Scullery
- 13 Mansche Bedchamber
- 14 Coal Bin
- 15 Cells (Single)
- 16 Cells (Crowded)
- 17 Dr. Vandorff
- 18 Dr. Blessing
- 19 Nurse Bayldon
- 20 Nurse Thurlson
- 21 Nurses' Station
- 22 Supply Room
- 23 The Laboratory
- 24 Bathroom
- 25 Storage
- 25 Cell

STAIRS TO
ATTIC



2ND FLOOR

STAIRS TO
KITCHEN

DUMBWAITER

SCALE IN IMPERIAL YARDS

