

# CAMPFIRE TALES

## SCOUTS AGAINST CTHULHU

# KEEPER MAPS PACK

*Campfire Tales* © 2024 Chaosium Inc. All rights reserved.

Call of Cthulhu (7th Edition) © 1981–2024 Chaosium Inc.

Chaosium Arcane Symbol (the Star Elder Sign) © 1983 Chaosium Inc. All rights reserved.

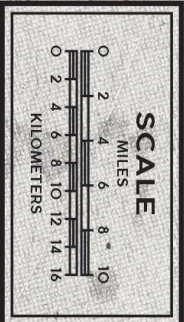
Call of Cthulhu, Chaosium Inc., and the Chaosium dragon are registered trademarks of Chaosium Inc.

This material is protected under the copyright laws of the United States of America. Reproduction of this work by any means without written permission of Chaosium Inc., except for the use of short excerpts for the purpose of reviews and the copying of character sheets and handouts for in-game use, is expressly prohibited.

Chaosium Inc.  
3450 Wooddale Court  
Ann Arbor, MI 48104



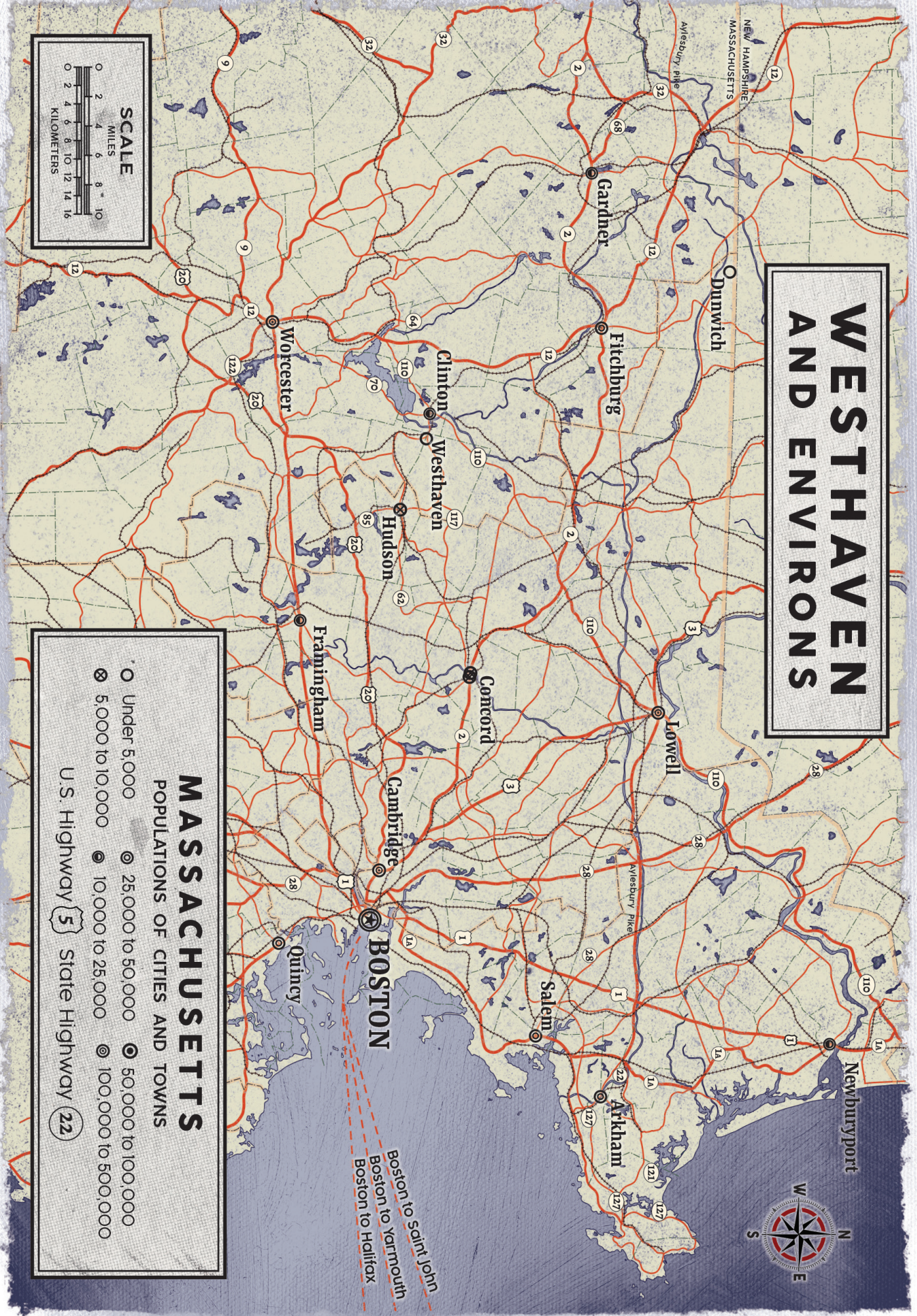
# WESTHAVEN AND ENVIRONS



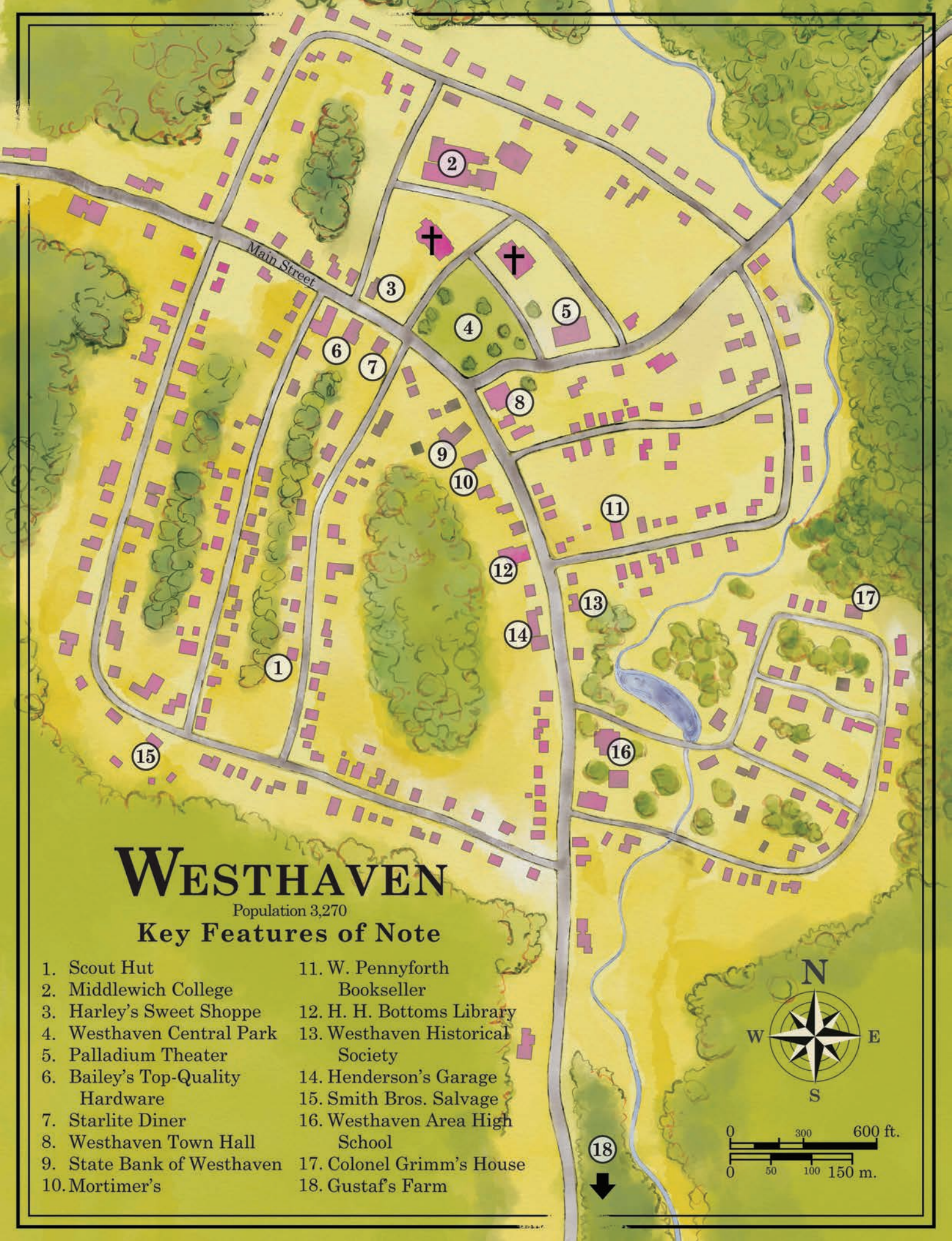
**MASSACHUSETTS**  
POPULATIONS OF CITIES AND TOWNS

- Under 5,000
- ⊗ 5,000 to 10,000
- ⊙ 10,000 to 25,000
- ⊕ 25,000 to 50,000
- ⊖ 50,000 to 100,000
- ⊗ 100,000 to 500,000

U.S. Highway **5** State Highway **22**



*Boston to Spirit John  
Boston to Yarmouth  
Boston to Halifax*

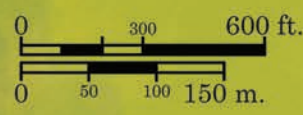


# WESTHAVEN

Population 3,270

## Key Features of Note

- |                                  |                                  |
|----------------------------------|----------------------------------|
| 1. Scout Hut                     | 11. W. Pennyforth Bookseller     |
| 2. Middlewich College            | 12. H. H. Bottoms Library        |
| 3. Harley's Sweet Shoppe         | 13. Westhaven Historical Society |
| 4. Westhaven Central Park        | 14. Henderson's Garage           |
| 5. Palladium Theater             | 15. Smith Bros. Salvage          |
| 6. Bailey's Top-Quality Hardware | 16. Westhaven Area High School   |
| 7. Starlite Diner                | 17. Colonel Grimm's House        |
| 8. Westhaven Town Hall           | 18. Gustaf's Farm                |
| 9. State Bank of Westhaven       |                                  |
| 10. Mortimer's                   |                                  |



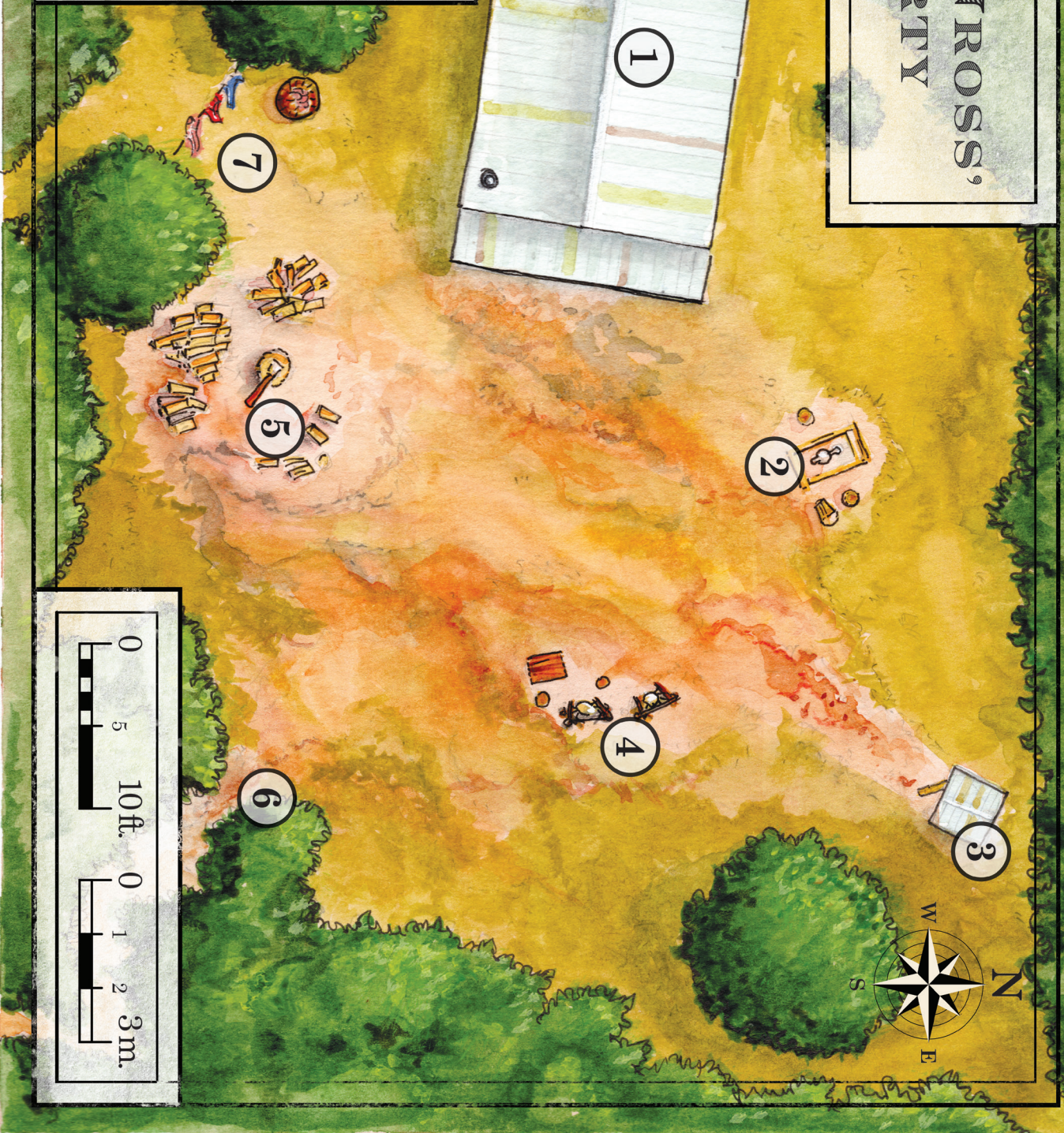
18



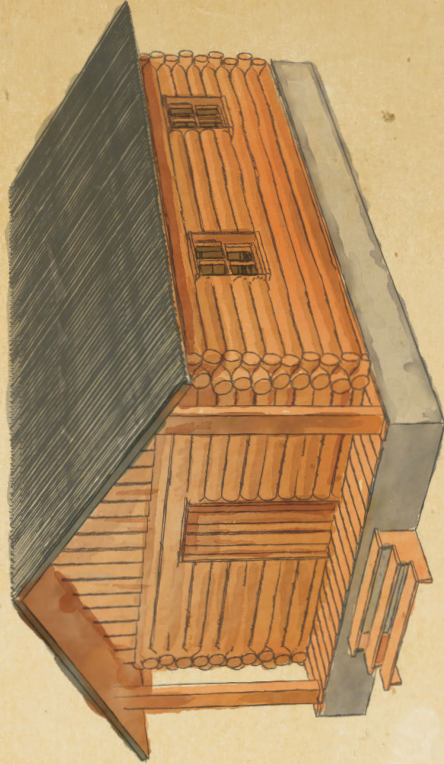
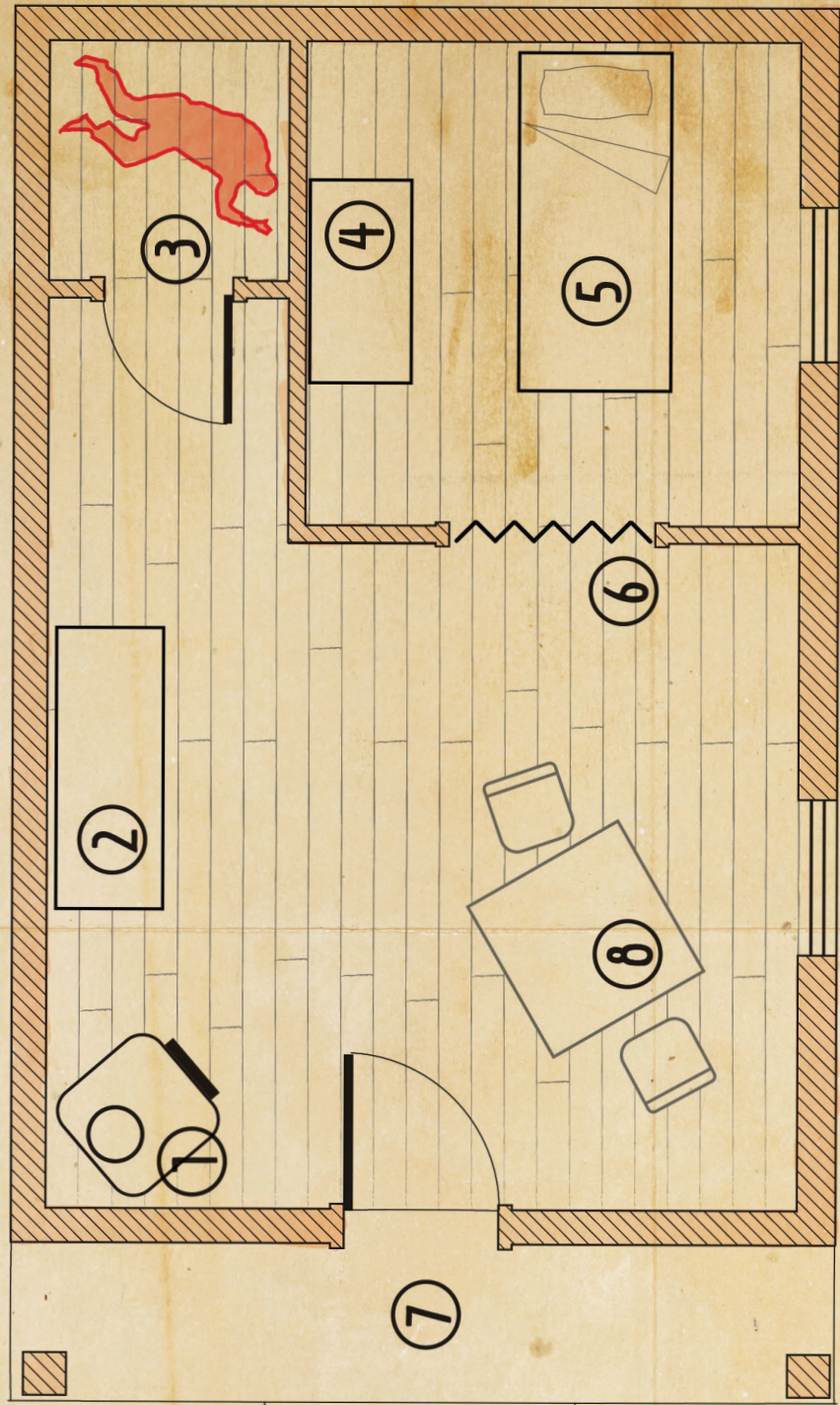
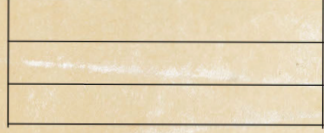
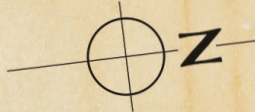
# NORMA GROSS, PROPERTY

## Key Features

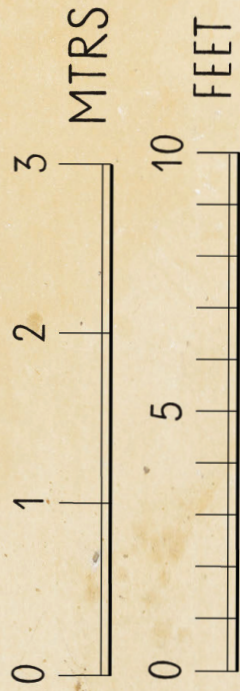
1. Cabin
2. Hand-Pump Well
3. Outhouse
4. Pelt-Drying Racks
5. Axe Yard
6. Trail to Old Logging Road
7. Clothesline



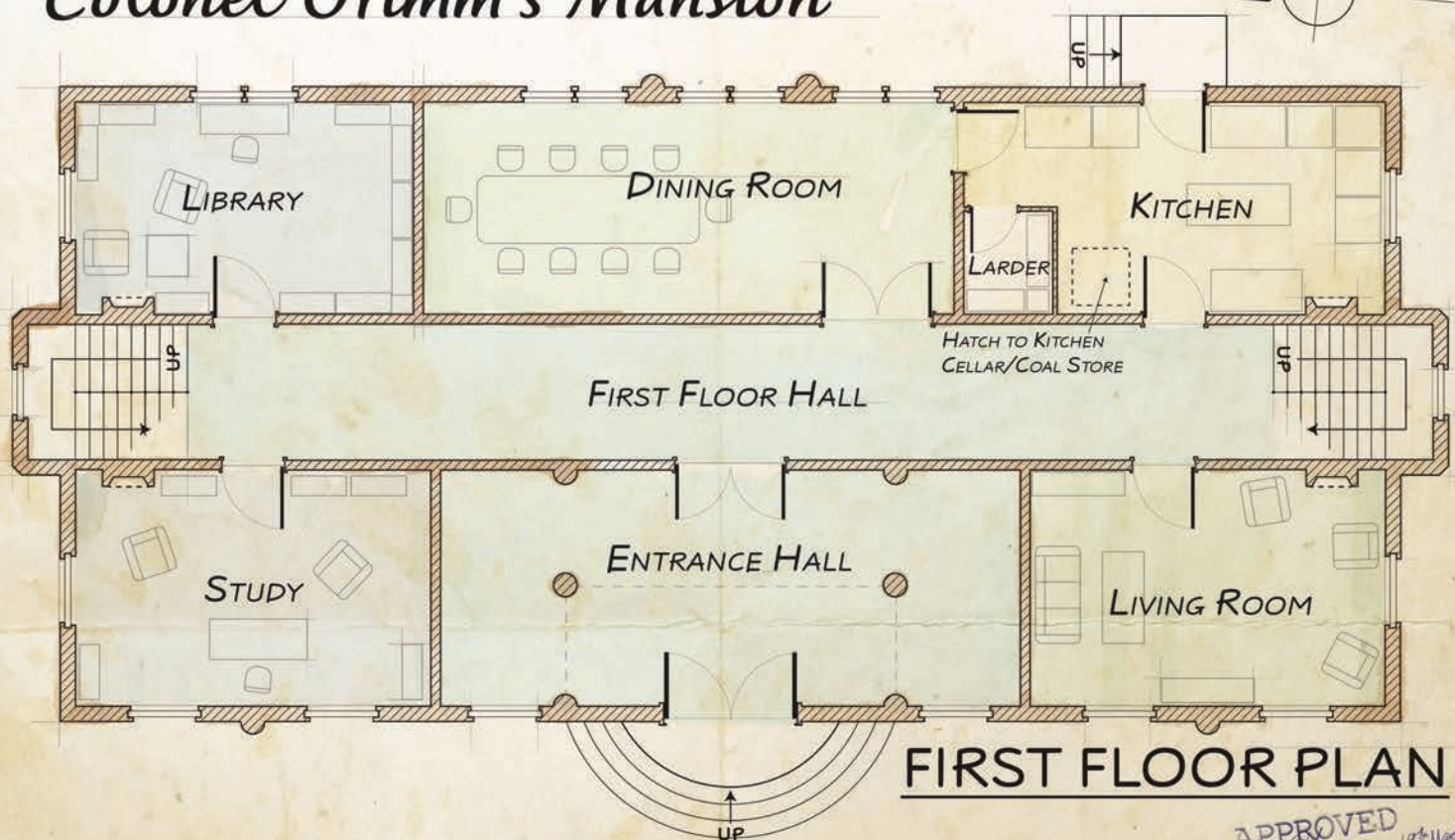
- ① WOOD STOVE
- ② CHEST OF DRAWERS
- ③ STORE CUPBOARD
- ④ DOUBLE WARDROBE
- ⑤ SINGLE BED
- ⑥ CURTAIN/SCREEN
- ⑦ PORCH
- ⑧ TABLE AND CHAIRS



# NORMA GROSS' CABIN

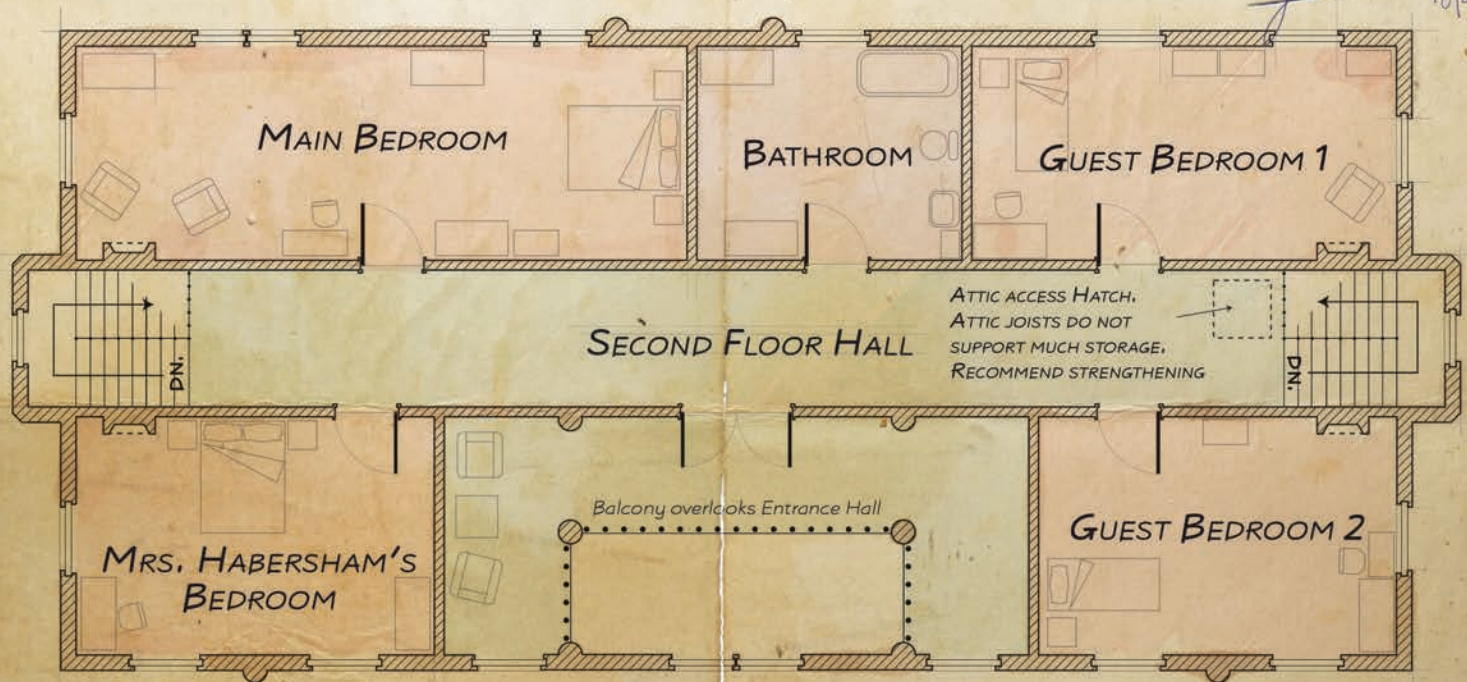


# Colonel Grimm's Mansion



**FIRST FLOOR PLAN**

APPROVED  
*Johnston* of Made 1898



**SECOND FLOOR PLAN**

0 1 2 3 4 5 MTRS

SCALE 0 5 10 20 30 40 50 FEET

**9 COTTON STREET, WESTHAVEN**

Mid 1800s two storey brick-built mansion in E. Westhaven.  
Internal remodeling/renovation planned by  
Rodger, Borland & Co.: Balcony overlooking Entrance Hall  
completely replaced New plumbing and wiring installed.  
New windows and window frames throughout.



REVISION	DATE
Work completed	2/2/1898

**RODGER, BORLAND & Co.**  
- ARCHITECTS -  
25 Mill Street, Cambridge, MA

DRWG N°	DRWN BY	TRACED	CHECKED	APPROV'D
1/3	SM	✓	✓	✓

STINKY!

GOLD!!

STRANGE  
VOICES

X  
LOST?





CROSSWAY CREEK

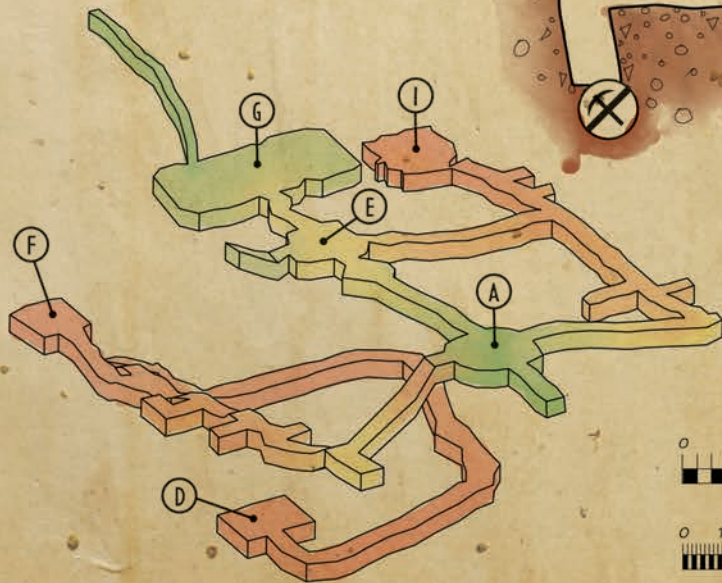
# ~ FALSTAFF GOLD MINE ~

## KEY

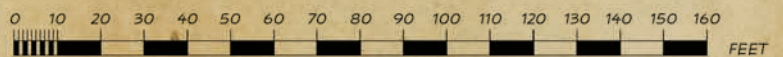
- A Staging Area
- B East Passage
- C Blocked Passage
- D The Ossuary
- E The Hall of Voices
- F The Doom
- G The Grand Ballroom
- H The Pit
- I The Secret Vault

-  Dead End
-  Blocked Passage

Silas Ardmore's Secret Entrance



Mine Entrance



# MUSKRAT LAKE

Muskrat Lake

1

X

X

X

X

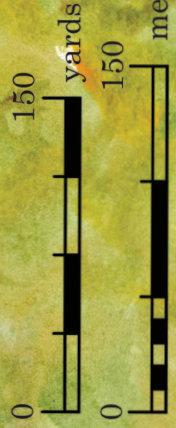
X

X

X

3

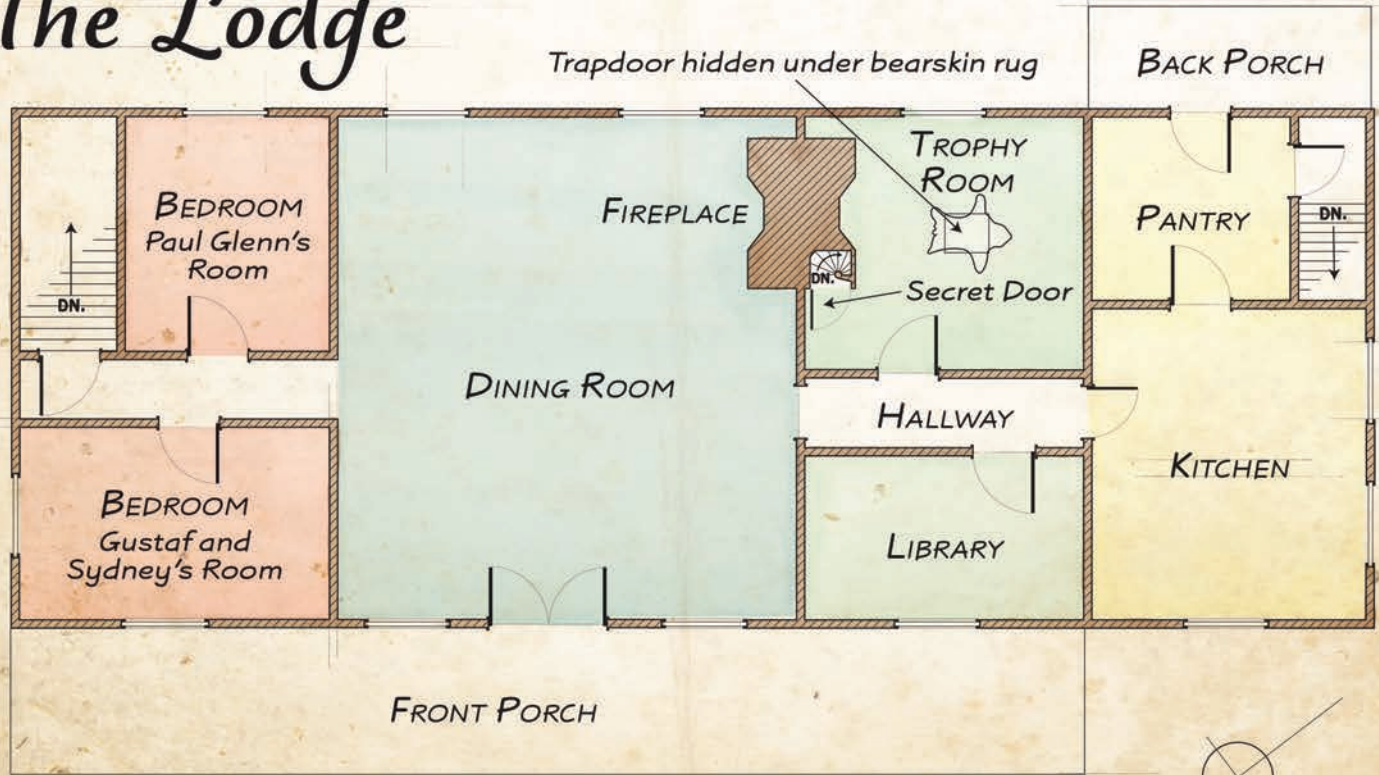
2



## Key Features

- 1. Woodland Altar
- 2. Dirt Road
- 3. Lodge
- X. Wicker One Encounter Areas

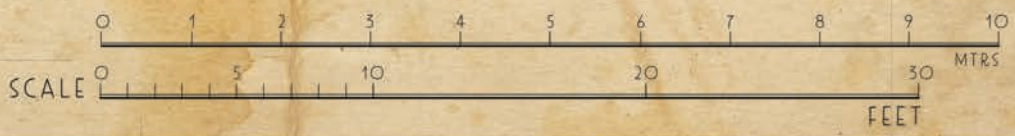
# The Lodge



## GROUND FLOOR

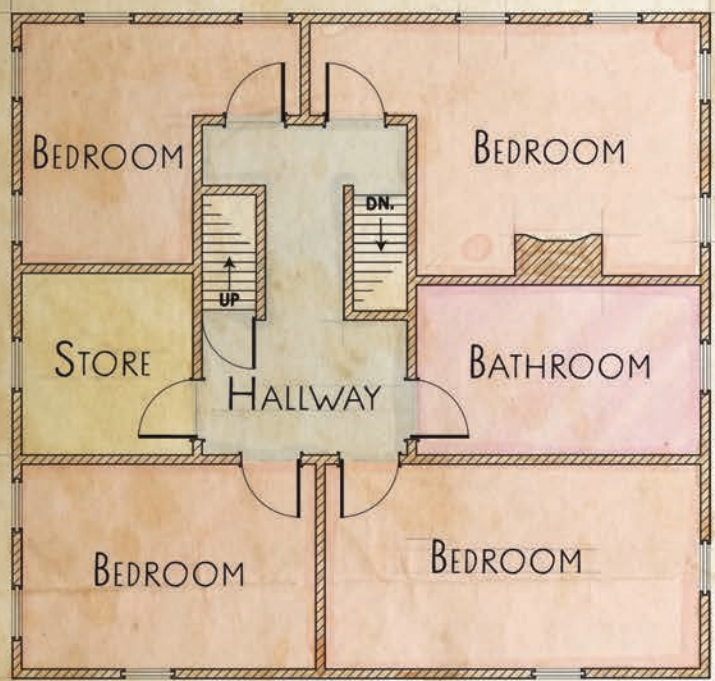


## BASEMENT

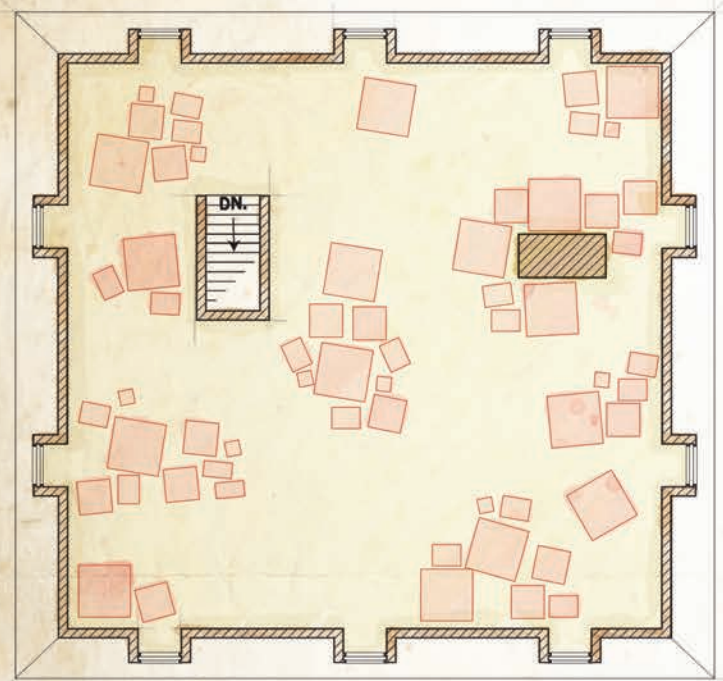


TITLE	Hunting Lodge Floor Plan
LOCATION	New England, United States
PURPOSE	Lodge for Hunting & Retreat
SCALE	1 inch = 5 ft - See above
DRAFTED BY	F. & V. Calthorpe & Associates

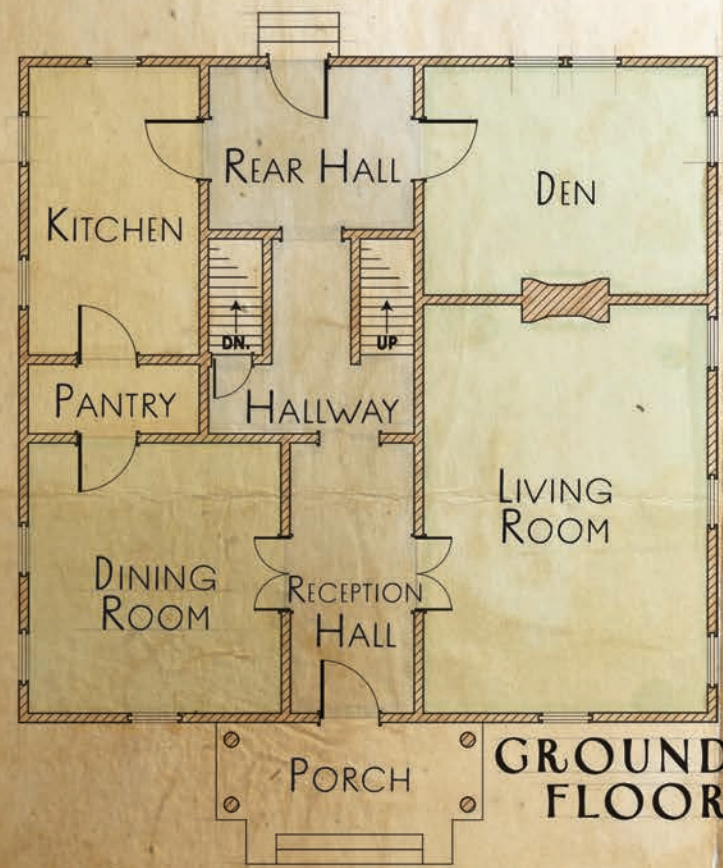
# GUSTAF'S HOUSE



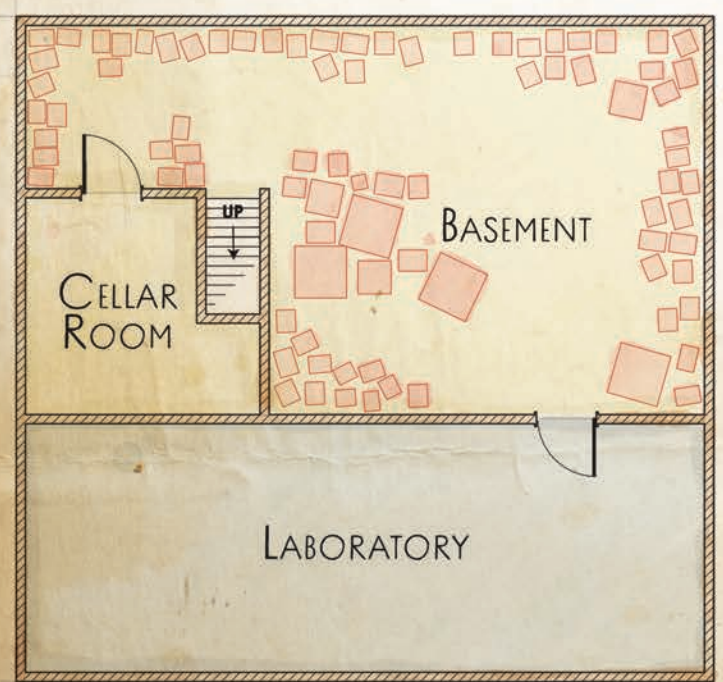
SECOND FLOOR



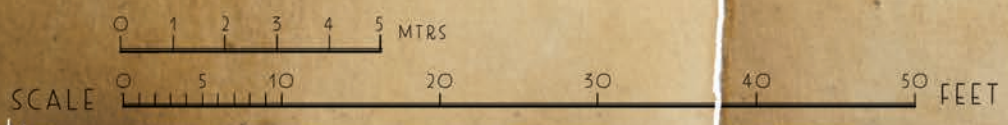
ATTIC



GROUND FLOOR



BASEMENT



**D. McCartney**  
 PROPERTY CONSULTANTS  
 ~ ESTD 1893 BOSTON ~